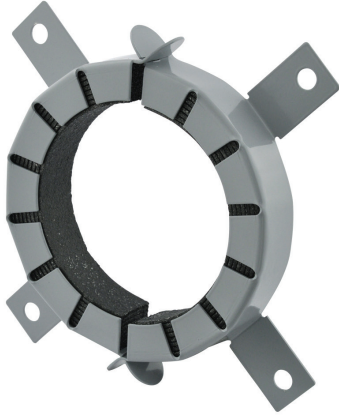


Certificate of Conformity BIS Pacifyre® System AWM II



Other countries

Walraven International
P.O. Box 15
3640 AA Mijdrecht (NL)
Tel. +31 (0)297 23 30 00
Fax +31 (0)297 23 30 99
export@walraven.com



Walraven Group

Mijdrecht (NL) · Tienen (BE) · Bayreuth (DE)
Grenoble (FR) · Banbury (GB) · Madrid (ES)
Barcelona (ES) · Mladá Boleslav (CZ)
Kraków (PL) · Kyiv (UA) · Moscow (RU)
Detroit (US) · Shanghai (CN)



EC-CERTIFICATE OF CONFORMITY

0761 – CPD – 0341

In compliance with the Directive 89/106/EEC of the Council of European Communities of 21 December 1988 on the approximation of laws, regulations and administrative provisions of the Member States relating to the construction products (Construction Products Directive – CPD), as later amended, it has been stated that the construction product

**Pipe penetration seal with the trade name
'BIS Pacifyre System AWM II'**

placed on the market by

**J. van Walraven Holding B.V.
Industrieweg 5
3641 RK Mijdrecht
The Netherlands**

and manufactured in the factory

Walraven Factory S2

has been submitted by the manufacturer to initial type-testing of the product and to a factory production control. The Materialprüfanstalt für das Bauwesen Braunschweig as a notified body (No. 0761) has performed the initial inspection of the factory and of the factory production control and performs the continuous surveillance, assessment and approval of the factory production control.

This certificate attests that all provisions concerning the attestation of factory production control described in the following document were applied:

European Technical Approval ETA-13/0906

This certificate has first been issued on 2013-06-28 and remains valid till 2018-06-28, as long as the conditions laid down in the harmonised technical specification in reference or the manufacturing conditions in the factory or the factory production control itself are not modified significantly.

Braunschweig, 2013-06-28

ÜZ-3/1241/13



Go.
.....
Dr.-Ing. W. Hinrichs
Head of certification